

Christmas Island does not usually experience cyclonic winds of the same ferocity as Northern Australia but the impact of strong winds and high seas has historically caused significant damage to property and infrastructure.

Storm surge can be a danger to residents of Kampong and Settlement. The AFP may recommend evacuation under certain conditions. Please cooperate and assist your family and neighbours where necessary.

Responsibilities of the Community in a Cyclone Season

1. Cleanup all loose materials outside the house.
2. Understand what has to be done when cyclone winds begin.
3. Cyclones are unpredictable. It is better to be prepared than have to clean up at the last minute.

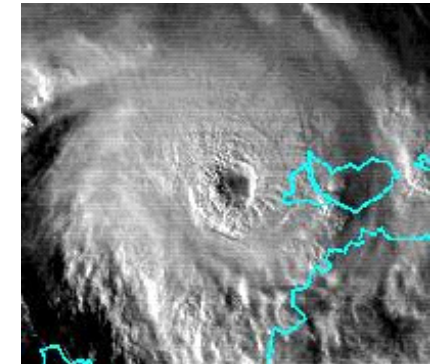


**EMERGENCY
TELEPHONE**

**CHRISTMAS ISLAND
POLICE**

9164 8444

**Regular updates are broadcast on 6RCI
and on the Roundabout Notice Board
Further details are also available on
www.bom.gov.au**



**WORKING
TOGETHER
IN A
CYCLONE
SITUATION**

Severe storm warning lights have recently been installed at various locations in the settled areas. The three lights on each pole represent the three levels of alert. The colour coded alert levels indicate the typical actions required as the storm approaches.

BLUE ALERT

Keep up to date with the development of the cyclone through radio, television, or internet

Secure or remove loose material and rubbish from around your home or work

**Organise your emergency kit::
first aid kit;
essential medications;
torch;
portable radio; and
spare batteries.**

Consider relocating people with special needs including people who are pregnant, elderly or have disabilities

Identify a safe place for pets

Remind your family of cyclone procedures

YELLOW ALERT

Monitor radio, TV or internet for information on the cyclone's progress, particularly any storm surge advice

Know where your family and pets are located. Consider sheltering pets early

Secure boats, caravans, trailers, garden sheds, rain-water tanks and LPG bottles to tie down points

Store or secure other loose items like outdoor furniture that is likely to be thrown about by destructive winds

Fasten all cyclone screens. Board up or heavily tape exposed windows

Put fuel in your vehicle and park it in a sheltered area with the handbrake on and in park or first gear

Ensure your emergency kit is complete and fill emergency containers with water

Close curtains and lock doors

Prepare to move quickly to the strongest part of your house or relocate to the nearest welfare centre if required

If you live in a low-lying coastal area and the cyclone is likely to create a storm surge, you may be advised to relocate now. Refer to your family cyclone plan.

RED ALERT

Keep listening to your portable radio for information on the cyclone's progress

Disconnect electrical appliances and turn off gas supply valves

Go immediately to the strongest, safest part of your house or the building you are in (ie. Internal hallway, bathroom or toilet) or to the closest welfare centre

Stay away from doors and windows and keep them closed and locked

Stay inside until the ALL CLEAR is given by authorities